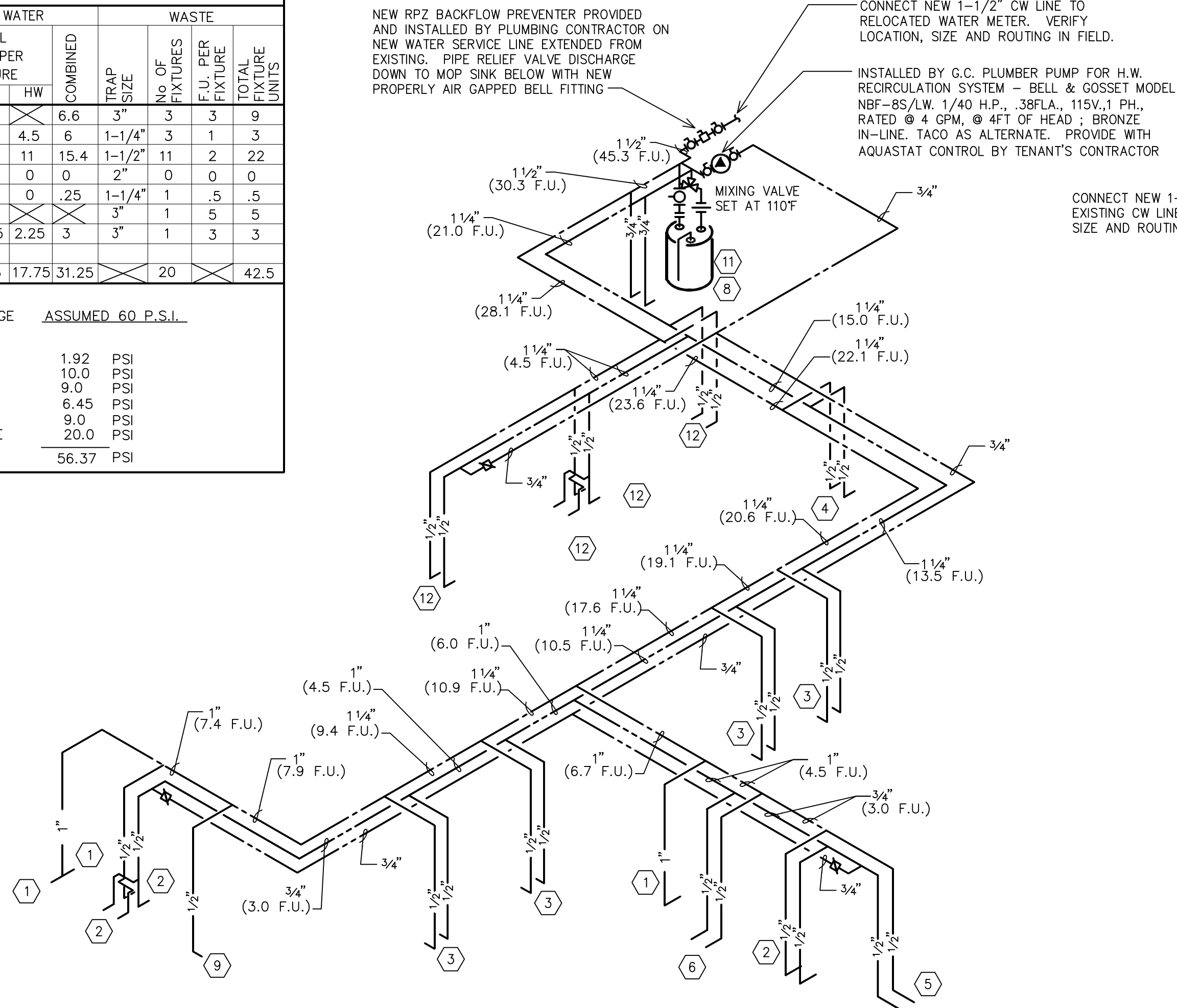
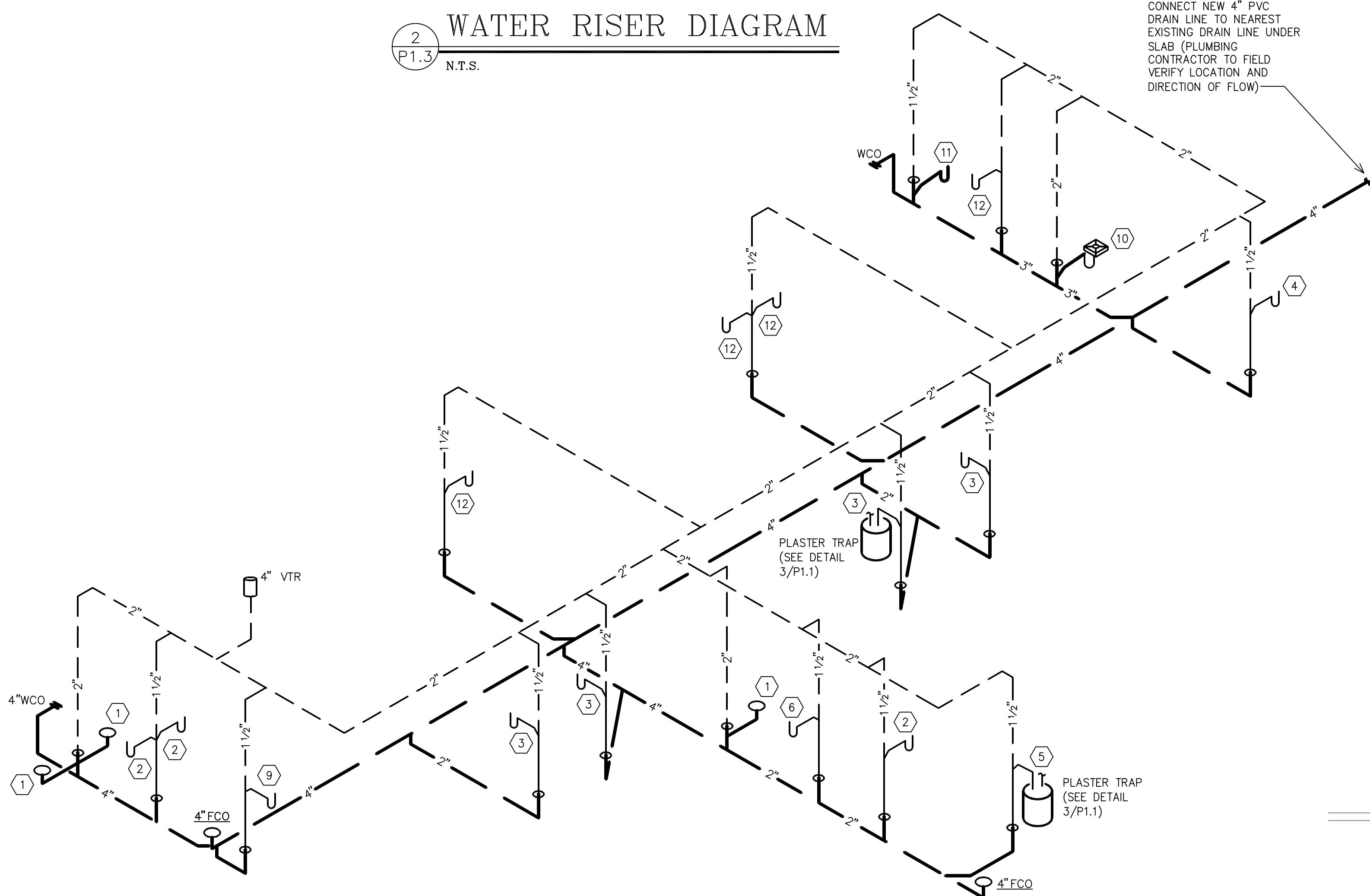


FIXTURE AND WATER CALCULATION											
NAME: BASED ON 2012 IPC		HOT AND COLD WATER						WASTE			
MARK	DESCRIPTION	No OF FIXTURES	F.U. PER FIXTURE	TOTAL F.U. PER FIXTURE		COMBINED	TRAP SIZE	No OF FIXTURES	F.U. PER FIXTURE	TOTAL F.U.	TOTAL FIXTURE UNITS
				CW	HW						
1	WATER CLOSET	3	2.2	6.6		6.6	3"	3		9	
2	LAVATORY	3	2	4.5	4.5	6	1-1/4"	3	1	3	
3,4,5,6,12	SINK	11	1.4	11	11	15.4	1-1/2"	11	2	22	
7	WALL BOX	0	4	0	0	0	2"	0	0	0	
9	DRINKING FOUNTAIN	1	.25	.25	0	.25	1-1/4"	1	.5	.5	
10	FLOOR SINK	1					3"	1	5	5	
11	MOP SINK	1	3	2.25	2.25	3	3"	1	3	3	
TOTAL F.U.		20		24.6	17.75	31.25		20		42.5	
G.P.M. 24 STREET STATIC PRESSURE RANGE ASSUMED 60 P.S.I.											
LOSSES											
MAIN TAP LOSS						1.92	PSI				
WATER METER						10.0	PSI				
BACKFLOW PREVENTER						9.0	PSI				
STATIC HEIGHT 15 FT.x.43						6.45	PSI				
PIPE LOSS						9.0	PSI				
HIGHEST PRESSURE FIXTURE						20.0	PSI				
TOTAL LOSSES						56.37	PSI				



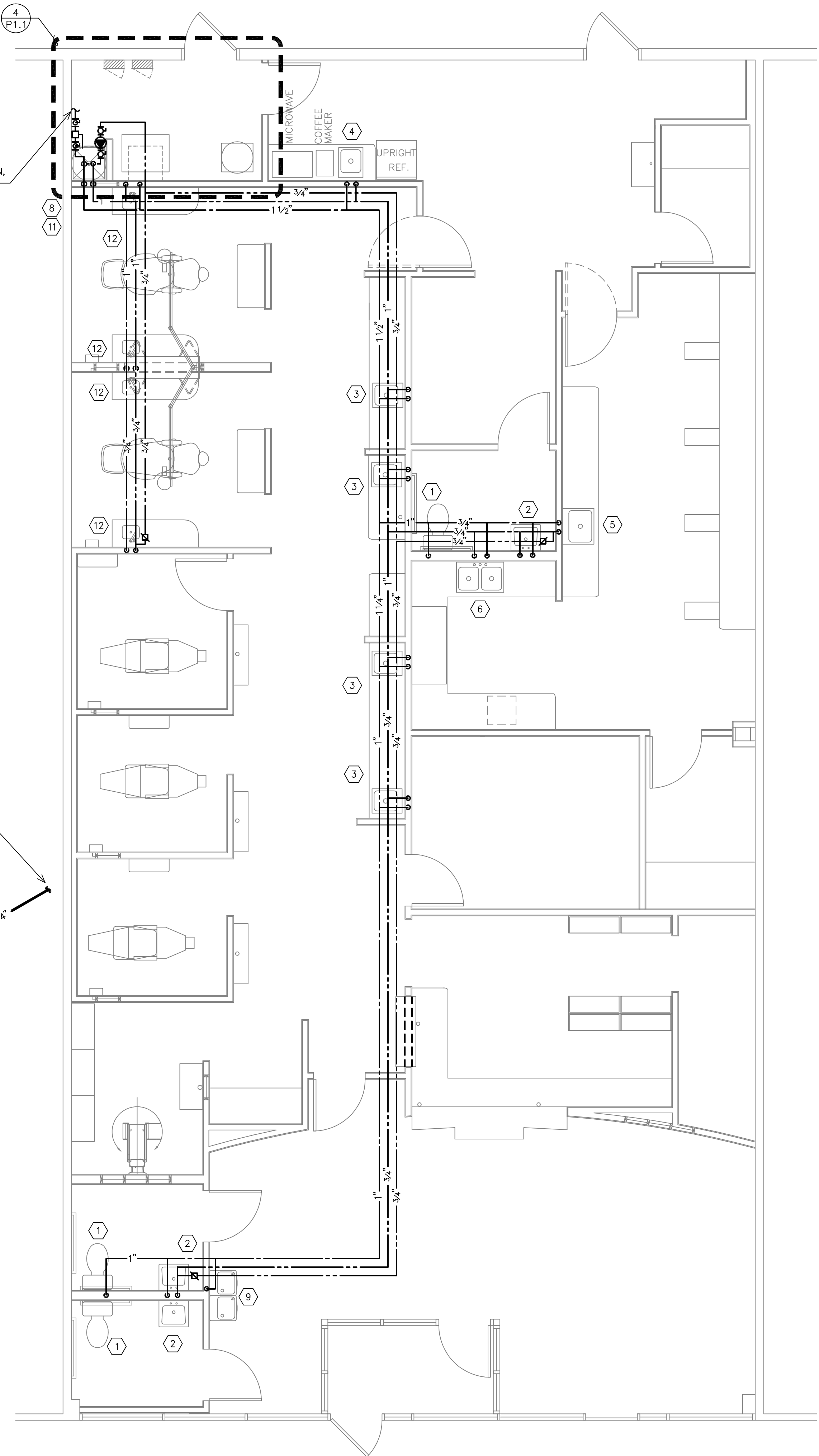
2
P1.3
N.T.S.

WATER RISER DIAGRAM



3
P1.3
N.T.S.

WASTE & VENT RISER DIAGRAM



1
P1.3
1/4" = 1'-0"

HOT AND COLD WATER PLAN

CONSULTANT:



DUNHAM

Dunham Associates, Inc.
50 South Sixth Street / Suite 1100
Minneapolis, Minnesota 55402-1540
PHONE 612.465.7550
FAX 612.465.7551
WEB dunhameng.com
mechanical + electrical
consulting engineering

CLIENT:

PROJECT INFORMATION:

DENTAL OFFICE

SEAL:

PROJECT NO.: 0415737-011
DRAWN BY: KR
CHECKED BY: GS

ISSUE: DATE:
PERMIT ISSUANCE 10-3-14

REVISION: DATE:

PROJECT LOCATION:
CHARLOTTESVILLE, VA

SHEET NUMBER / TITLE:

P1.3
HOT & COLD WATER PLAN